

Holland  America

#1 IN ALASKA GLACIERS
#1 IN ALASKA WILDLIFE & WILDERNESS TOURS



MAY-SEPTEMBER 2025

ALASKA
CRUISES & CRUISE TOURS

TABLE OF CONTENTS

- TOP REASONS TO CRUISE ALASKA WITH US 2
- BEST TIME TO VISIT ALASKA 3
- ALASKA CRUISES & CRUISETOURS 4
- MORE WAYS TO SEE GLACIERS 5
- MORE ACCESS TO WILDLIFE 6
- VISIT ALASKA'S NATIONAL PARKS 7
- ALASKA CRUISES 8
 - 7-DAY EXPERIENCES 9
 - 14-DAY EXPLORATIONS 10
 - LEGENDARY** 28-DAY ARCTIC CIRCLE SOLSTICE 11
- ALASKA CRUISETOURS 12
 - EXPERIENCE DENALI BY PRIVATE RAIL & RESORT 13
 - MCKINLEY CHALET RESORT – YOUR ALASKA RETREAT 14
 - JOURNEY INTO DENALI NATIONAL PARK 15
 - EXCLUSIVE** DISCOVER THE YUKON 16
 - EXPERIENCE ALASKA YOUR WAY 17
 - FEATURED** 18-DAY DENALI & YUKON 18
- CRUISETOUR ITINERARIES 19
 - CRUISETOUR FEATURES & DINING PLANS 21
- ALASKA UP CLOSE 22
- ONBOARD EXPERIENCES 26
- BEST DEAL EVER! HAVE IT ALL EARLY BOOKING BONUS 27
- TERMS & CONDITIONS 28



MAP LEGEND

- 7-Day Alaska Inside Passage Cruises
- 7-Day Glacier Discovery Cruises
- 7-Day Alaska Explorer Cruises
- 14-Day Great Alaska Explorer Cruises
- 28-Day Arctic Circle Solstice Cruise
- Land Routes
- ⋯ Flight Routes
- ▬▬▬ McKinley Explorer® Railway
- ▬▬▬ White Pass & Yukon Route Railway
- ▬▬▬ Cruisetrain

ENLARGED AREA SHOWN

TOP REASONS TO CRUISE ALASKA WITH HOLLAND AMERICA LINE



Glacier Bay National Park & Preserve, Alaska



#1 IN ALASKA GLACIERS

See more Alaska glaciers with Holland America Line than any other cruise line! Get a close-up view from a cruise ship or catamaran, trek across the surface on a guided hike, or admire them from above on a thrilling flightseeing tour.



#1 IN ALASKA WILDLIFE & WILDERNESS TOURS

We now offer more access to Alaska wildlife than any other cruise line! Enjoy the complimentary **Tundra Wilderness Tour** through Denali National Park & Preserve plus onboard wildlife experts and National Park Service Rangers.



COMPLIMENTARY PARK TOURS

Dive deeper into Denali's ecology, history, and wildlife on the popular **Tundra Wilderness Tour** (included on all 2- and 3-night park stays) or the fascinating **Denali Natural History Tour** (included on all 1-night park stays).



ALASKA UP CLOSE® EXPERIENCE

See more glaciers and wildlife than with any other cruise line and immerse yourself in the tales, tastes, and terrain of Alaska with our exclusive presentations, regionally inspired cuisine, and expert-led destination programming.



FRESH LOCAL SEAFOOD

Savor fresh, certified sustainable, and traceable wild Alaska seafood on board our ships with the first and only cruise line to earn the distinguished Responsible Fisheries Management certification.



HAVE IT ALL EARLY BOOKING BONUS

Reserve your 2025 Alaska cruise or cruisetour early and get 60% off our best amenities *plus* added benefits and free upgrades.

Early Booking *Bonus*
Have it all.

NORTHERN WONDERS AWAIT

With Holland America Line, any time is the best time to visit Alaska

Whether you're spotting bears in May, kayaking glacial waters in July or admiring September's fall foliage, any time is the best time to visit Alaska with Holland America Line. We bring you closer to everything the 49th state has to offer – including up to 3 nights each at the gates of Denali National Park & Preserve and in Canada's wild Klondike Yukon Territory.

	May	June	July	August	September	October
Driest Weather						
Warmest Weather: 60°F+						
Most Daylight: 15 hours+						
Denali Park Road Open						
Glacier Bay National Park Open						
Best Glacier Calving						
Best Bird Watching						
Best Bald Eagle Viewing						
Best Whale Watching						
Best Fishing						
Best Bear Viewing						
Best Bear Viewing in Denali						
Best Denali Hiking						
Denali Wildflowers Season						
Northern Lights						



EXPERIENCE ALASKA TWO WAYS

From a coastal cruise along Alaska's iceberg-studded shoreline to an in-depth cruisetour exploring its treasures by land and sea, you're sure to uncover the best of Alaska & the Yukon with Holland America Line.



ALASKA CRUISES



Margerie Glacier, Glacier Bay National Park & Preserve, Alaska

- 7- to 28-day itineraries
- Convenient weekend departures from Seattle and Vancouver
- Privileged access to Glacier Bay National Park & Preserve
- Onboard National Park Service Rangers, wildlife experts and more
- Prime docking locations that give you a head start on sightseeing

Click to **LEARN MORE** about
ALASKA CRUISES



ALASKA CRUISETOURS



White Pass & Yukon Route Railway

- 9- to 18-day itineraries
- A land-and-sea package that brings you into the heart of Alaska's wild interior
- All cruisetours include a visit to Denali National Park & Preserve
- Exclusive access to Canada's Klondike Yukon Territory on Denali & Yukon itineraries
- Local Tour Directors providing expert assistance during your time on land
- Private glass-domed railcars and premium wilderness lodge at the gates of Denali

Click to **LEARN MORE** about
ALASKA CRUISETOURS



MORE WAYS TO SEE **GLACIERS**



#1 IN ALASKA GLACIERS

Soak in the majesty of Alaska’s jaw-dropping glaciers by sea, land or air with the cruise line that allows you to see more of these blue-hued giants than any other. Our cruise ships sail directly up to some of the 49th state’s most picturesque glaciers before slowly rotating for a 360° view. You may also choose to customize your glacier experience on one of our acclaimed shore excursions. Trek or dogsled your way across the icy surface, admire their awe-inspiring grandeur as you bike along nearby paths, take in aerial vistas by seaplane or helicopter, or see them by catamaran, rigid inflatable boat (RIB), or kayak while gliding through brisk Alaska waters.



Hiking



Sailing



Flightseeing



Dogsledding

Click to **LEARN MORE** about our **TOP EXCURSIONS**

MORE ACCESS TO **WILDLIFE**



Moose, Denali National Park & Preserve, Alaska



Grizzly bear



Humpback whale



Bald eagle



Sea otter



Gray wolf



Dall sheep

#1 IN ALASKA WILDLIFE & WILDERNESS TOURS

With more access to Alaska wildlife than any other cruise line, our 175+ animal sanctuary, sightseeing, and land excursions bring you up close to creatures great and small – from the sparrows of Hoonah to the whales of Juneau’s Auke Bay. Whether you’re observing marine mammals from one of our ships’ expansive decks, photographing moose in Anchorage, marveling at Denali National Park & Preserve’s “Big 5” land animals on the included **Tundra Wilderness Tour**, or coming face-to-face with birds of prey at a rehabilitation center, we bring you closer to Alaska’s incomparable animals. Bald eagles, grizzly bears, caribou, gray wolves... they’re all here, waiting to be discovered on a Holland America Line cruisetour.

VISIT ALASKA'S NATIONAL PARKS



The magnitude of Alaska's national parks is unparalleled. Of the United States' 10 largest national parks, no fewer than 7 can be found in the nation's largest state. Below are 4 spectacular parks you can witness for yourself when you embark on an unforgettable Holland America Line Alaska cruisetour.

☑ DENALI NATIONAL PARK & PRESERVE Denali's sprawling 6 million acres are home to diverse wildlife, imposing landscapes and North America's highest mountain peak. Experience the park's majesty for yourself on a Holland America Line Alaska cruisetour, all of which include a 1- to 3-night stay at the gates of Denali.

☑ GLACIER BAY NATIONAL PARK & PRESERVE Part of the larger Kluane / Wrangell-St. Elias / Glacier Bay / Tatshenshini-Aleek UNESCO World Heritage site and one of the world's largest internationally protected biosphere reserves, 3.3 million-acre Glacier Bay is best experienced by sea.

☑ KENAI FJORDS NATIONAL PARK Kenai Fjords National Park boasts cascading glaciers, lush waterfalls and many of Alaska's most beloved wildlife species. See these wonders for yourself on our 14-Day *Ultimate Denali* cruisetour including two nights in spectacular Seward.

☑ WRANGELL-ST. ELIAS NATIONAL PARK At a staggering 13.2 million acres, Wrangell-St. Elias National Park has more than earned its nickname, "the Mountain Kingdom of North America." Home to Hubbard Glacier, it's also the largest national park in the United States.

LEARN MORE about the
NATIONAL PARKS WE VISIT



ALASKA CRUISES

We've been visiting Alaska since 1947 — before it was even a state! Get ready to take in the Last Frontier's majestic glaciers, incredible wildlife and charming towns on board perfectly sized ships built to explore the Great Land.

- **#1 IN GLACIERS** See more Alaska glaciers with Holland America Line than any other cruise line
- **ONBOARD WILDLIFE EXPERTS** and National Park Service Rangers
- **PERFECTLY SIZED SHIPS** give you a front-row seat to Alaska's splendor
- **PRIME DOCKING LOCATIONS** put you just steps away from everything Alaska has to offer
- **WE MAKE IT EASY** Convenient roundtrip departures from Seattle and Vancouver allow you to see Alaska from your doorstep



Hubbard Glacier, Alaska



Nieuw Amsterdam, Haines, Alaska



Humpback whale breach

HollandAmerica.com

7-DAY EXPERIENCES

7-DAY ALASKA EXPLORER

This roundtrip sailing from Seattle features convenient weekend departures and stops in historic Juneau, stunning Sitka, and charming Ketchikan. Visits to either Glacier Bay or Dawes Glacier complete this classic exploration of the 49th state’s world-renowned wonders.



ALASKA EXPLORER

ROUNDRIP SEATTLE

Eurodam
May 3, 10, 17, 24, 31;
Jun 7, 14, 21, 28;
Jul 5, 12, 19, 26;
Aug 2, 9, 16, 23, 30;
Sep 6, 13, 20, 27;
Oct 4



ALASKA EXPLORER

ROUNDRIP SEATTLE

Westerdam
Apr 27; **May** 4, 11, 18, 25;
Jun 1; **Jul** 6, 13, 20, 27;
Aug 3, 10, 17, 24, 31;
Sep 7, 14, 21, 28

7-DAY GLACIER DISCOVERY

Both the north- and south-bound iterations of this cruise call on Skagway, Juneau, and Ketchikan. The itinerary also includes two full “Glacier Days” in Glacier Bay National Park & Preserve and either grand Hubbard Glacier or glorious College Fjord.



GLACIER DISCOVERY NORTHBOUND

VANCOUVER TO WHITTIER (ANCHORAGE)

Noordam
May 11, 25; **Jun** 8, 22;
Jul 6, 20; **Aug** 3, 17, 31
Nieuw Amsterdam
May 18; **Jun** 1, 15, 29; **Jul** 13, 27;
Aug 10, 24; **Sep** 7



GLACIER DISCOVERY SOUTHBOUND

WHITTIER (ANCHORAGE) TO VANCOUVER

Noordam
May 18; **Jun** 1, 15, 29; **Jul** 13, 27;
Aug 10, 24; **Sep** 7
Nieuw Amsterdam
May 25; **Jun** 8, 22; **Jul** 6, 20;
Aug 3, 17, 31; **Sep** 14

7-DAY ALASKA INSIDE PASSAGE

This weeklong cruise sails roundtrip from Vancouver, calling on Juneau, Skagway and Ketchikan before navigating back through Alaska’s beloved Inside Passage. Visits to Glacier Bay and the Tracy Arm Fjord round out this popular itinerary in singularly spectacular fashion.



ALASKA INSIDE PASSAGE

ROUNDRIP VANCOUVER

Koningsdam
Apr 26; **May** 3, 10, 17, 24, 31;
Jun 7, 14, 21, 28; **Jul** 5, 12, 19, 26;
Aug 2, 9, 16, 23, 30; **Sep** 6, 13, 20, 27
Nieuw Amsterdam
Sep 21♦
Zaandam
May 7, 14, 21, 28; **Jun** 4, 11, 18, 25;
Jul 2, 9, 16, 23, 30; **Aug** 6, 13, 20, 27;
Sep 3, 10, 17, 24

♦ This sailing does not include a service call for shore excursions at Tracy Arm.



Tracy Arm Fjord, Alaska



Dawes Glacier, Alaska

14-DAY EXPLORATIONS

14-DAY GREAT ALASKA EXPLORER

Uncover Alaska's popular ports and hidden gems on this two-week journey of discovery. Spend time exploring the Last Frontier's largest and capital cities as well as less-traveled wonders including Endicott Arm Fjord and the "Halibut Fishing Capital of the World," Homer.



GREAT ALASKA EXPLORER
 ROUNDTrip VANCOUVER
 Nieuw Amsterdam
 May 4



GREAT ALASKA EXPLORER
 ROUNDTrip VANCOUVER
 Noordam
 Sep 14



28-DAY ARCTIC CIRCLE SOLSTICE

ROUNDTRIP SEATTLE *Westerdam* 2025: Jun 8

- Venture north of the Arctic Circle to experience Alaska’s majestic landscapes beneath the glow of the midnight sun
- Traverse the Bering Sea while enjoying scenic cruising along the Inside Passage, Hubbard Glacier, Glacier Bay and more
- Call on such classic ports as Ketchikan and Juneau as well as unique stops including Nome and the fabled Kodiak Islands



🌙 **Evening Stay.** Departure between 10:00 p.m. and midnight. | Calls to Glacier Bay National Park & Preserve are pending government approval.
 🌙 **Extended Stay.** Departure leaving the next calendar day. | For the most up-to-date details and fares, visit HollandAmerica.com.



ALASKA CRUISETOURS

Combine the best of an Alaska cruise with an unforgettable journey into the heart of Alaska's interior.



- **MORE ACCESS TO ALASKA WILDLIFE** than any other cruise line, with onboard wildlife experts and 175+ animal sanctuary, sightseeing, and shore excursions
- **COMPLIMENTARY PARK TOURS** All Alaska cruisetours include a guided visit to Denali National Park & Preserve. Go wildlife-spotting on the **Tundra Wilderness Tour** (included on all 2- and 3-night Denali stays) or discover the park's natural and cultural treasures on the **Denali Natural History Tour** (included on all 1-night Denali stays).
- **THE YUKON EXPERIENCE** Bask in untamed wilderness, experience First Nations culture and uncover Dawson City's Klondike Gold Rush tales while your expert Tour Director helps you get the most out of your Yukon adventure
- **UNESCO SITES** All Alaska cruisetours include a visit to at least one UNESCO World Heritage site:
 - » **Glacier Bay National Park & Preserve** (part of the larger, UNESCO-listed Kluane / Wrangell-St. Elias / Glacier Bay / Tatshenshini-Alsek area)
 - » **Hubbard Glacier** (also part of the aforementioned area)
 - » **Dawson City, Yukon** (part of the UNESCO-listed Tr'ondëk-Klondike region)
- **WE MAKE IT EASY** Access via our private railcars and luxury motorcoaches, including luggage transport directly to your room, makes travel into Alaska's interior seamless and convenient



Caribou, Denali National Park & Preserve, Alaska



Find the perfect Alaska cruisetour for you with our **interactive quiz!** Combine your cruise with a scenic train ride and up to 3 nights at Denali National Park & Preserve plus a guided journey into the wild Yukon Territory.



EXPERIENCE DENALI BY **PRIVATE RAIL & RESORT**

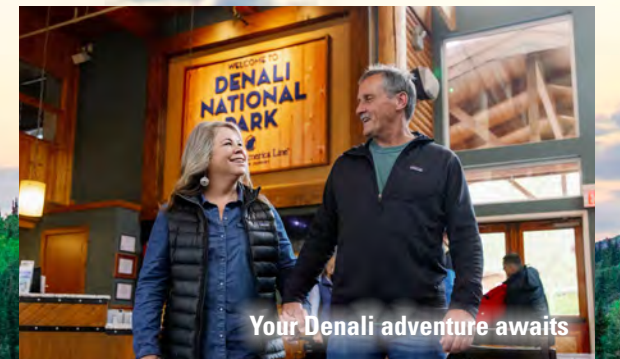
Enjoy a scenic train ride aboard our premium glass-domed McKinley Explorer® railcars as you journey through breathtaking wilderness into Alaska's wild interior. Your destination? Our exclusive 60-acre McKinley Chalet Resort – your base camp for adventures in Denali National Park & Preserve and your home for the next 1-3 nights. At the heart of it all lies bustling Denali Square™ – the perfect place to tuck into celebratory meals, shop for handcrafted local goods, enjoy lively entertainment, and swap tales of the day's adventures around a cozy outdoor firepit.



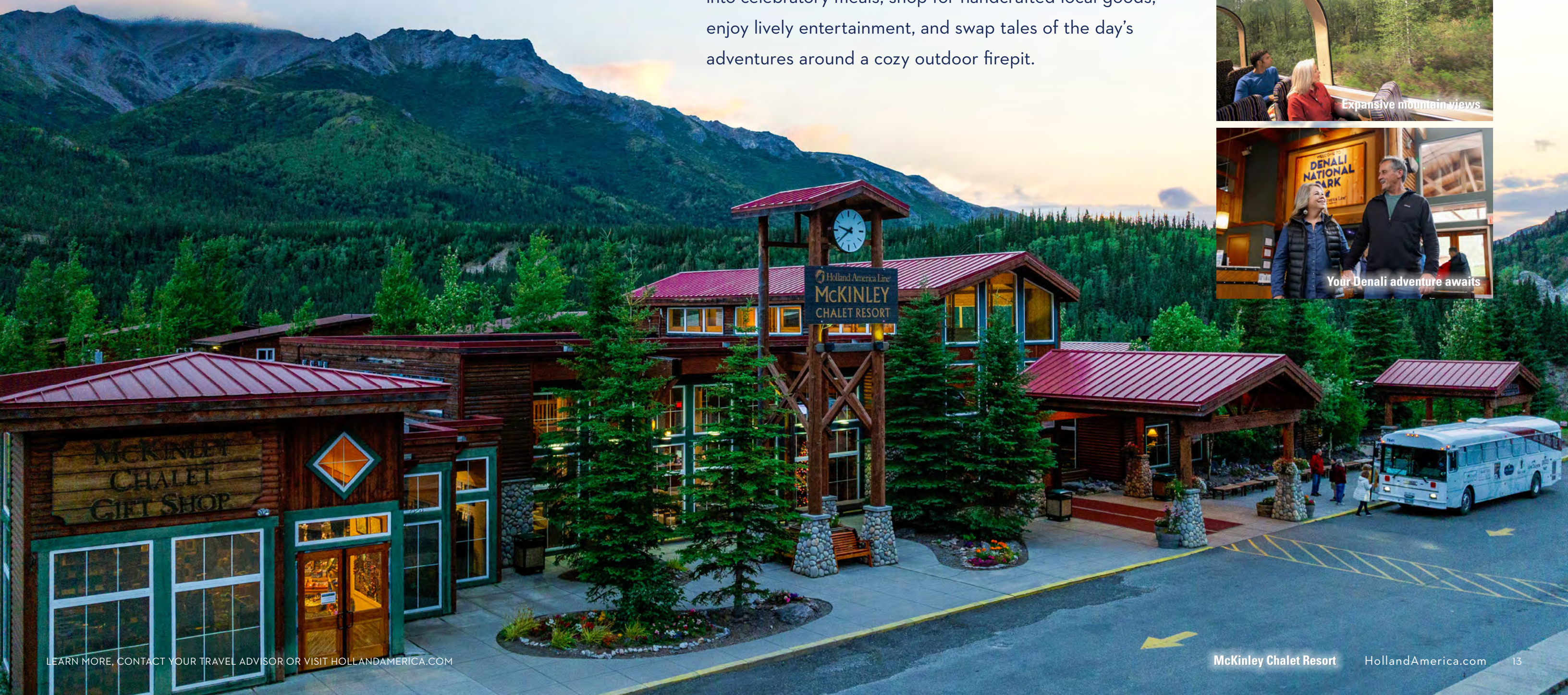
McKinley Explorer®



Expansive mountain views



Your Denali adventure awaits





MCKINLEY CHALET RESORT

YOUR ALASKA RETREAT



Denali Suites



TASTE
ALASKA

Karstens Public House



Denali Square Amphitheater



Denali Artist-in-Residence

DENALI SUITES

Elevate your McKinley Chalet Resort experience by upgrading to a Denali Suite. Spread out in your spacious seating area, take in stunning park views from your private balcony, and enjoy a range of amenities including an in-suite coffee machine, refrigerator, and more.

TASTE ALASKA AT DENALI SQUARE

Here, authentic Alaska flavors take center stage. Grab a morning cup of coffee at Grizzly Grind, savor regional specialties at Karstens Public House, experience fine dining Alaska-style at Canyon Steakhouse, and sample local craft beer and more at the Gold Nugget Saloon.

DENALI SQUARE AMPHITHEATER

At the heart of Denali Square lies our covered amphitheater. Take a seat on one of the outdoor benches to watch a National Park Service Ranger presentation, wildlife expert lecture, demonstration of regional traditions, or live music performance by local artists.

ARTIST-IN-RESIDENCE CABIN

Artists have been living, working and creating in U.S. national parks since the late 19th century. Experience this proud tradition for yourself at Denali Square's Artist-in-Residence Cabin, where you'll find local artists happy to display and discuss the process behind each unique work of art.



JOURNEY INTO DENALI NATIONAL PARK

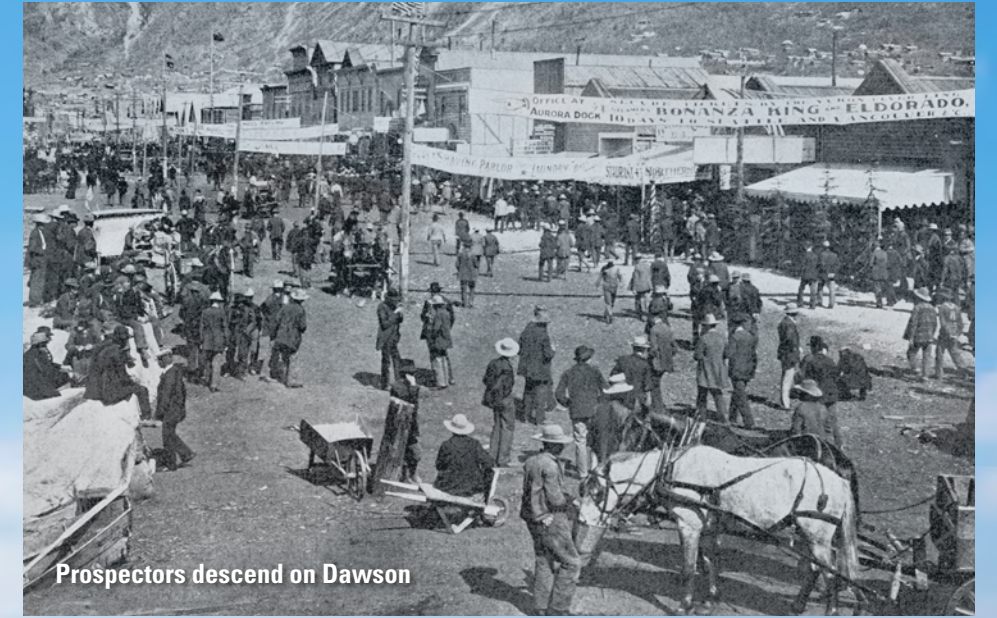
Our Alaska cruisetours usher you to the gates of Denali National Park & Preserve. Embark on a safe and secure adventure off the beaten path as you head out on a guided nature walk, paddle down the Nenana River, maneuver an all-terrain vehicle through untouched wilderness, and so much more. Enjoy a Denali National Park tour during the land portion of your journey, with the **Tundra Wilderness Tour** included on all 2- and 3-night stays and the **Denali Natural History Tour** on all 1-night stays at McKinley Chalet Resort. Witness untamed natural beauty, spot Denali's "Big 5" land animals (bears, moose, Dall sheep, caribou, and gray wolves), and immerse yourself in the park's rich cultural and ecological heritage.

EXCLUSIVE

DISCOVER **THE YUKON**



Venture where few have gone before with the only cruise line offering up to 3 nights in the heart of the untamed Yukon Territory. As part of the Yukon's sub-arctic Tr'ondëk-Klondike region – a UNESCO World Heritage site – Dawson City boasts an intoxicating blend of sweeping landscapes, native traditions and fascinating Gold Rush history. An 1896 gold discovery set off a frenzy of prospectors making the treacherous journey to the Yukon, and soon this unassuming spot at the confluence of the Klondike and Yukon Rivers became known as the “Paris of the North.” Follow in their footsteps on board the historic White Pass & Yukon Route Railway and take in the region's rugged natural beauty while your expert Tour Director shares tips, tricks, and insider knowledge.



Prospectors descend on Dawson





EXPERIENCE ALASKA YOUR WAY

	CLASSIC ALASKA & DENALI	SIGNATURE ALASKA & DENALI	ULTIMATE ALASKA & DENALI	ALASKA, DENALI & YUKON
WHAT IS IT?	Alaska & Denali highlights	Best of Alaska & Denali	Best of Alaska & Denali + a quaint Alaska town	Best of Alaska & Denali + the Yukon Territory
WHICH CRUISE IS INCLUDED?	<i>7-Day Glacier Discovery</i>	<i>7-Day Glacier Discovery</i>	<i>7-Day Glacier Discovery</i>	<i>7-Day Glacier Discovery</i> OR <i>7-Day Alaska Inside Passage (3-4 nights)</i>
HOW MANY DAYS ON LAND?	2-3	3-5	7	6-11
HOW MANY NIGHTS AT DENALI NATIONAL PARK?	1	2-3	2	2-3
WHICH "GLACIER DAYS" ARE INCLUDED?	<ul style="list-style-type: none"> • Glacier Bay National Park & Preserve • College Fjord OR Hubbard Glacier 	<ul style="list-style-type: none"> • Glacier Bay National Park & Preserve • College Fjord OR Hubbard Glacier 	<ul style="list-style-type: none"> • Glacier Bay National Park & Preserve • College Fjord OR Hubbard Glacier 	<ul style="list-style-type: none"> • Glacier Bay National Park & Preserve* • College Fjord OR Hubbard Glacier†
WHICH DENALI NATIONAL PARK TOUR IS INCLUDED?	<i>Denali Natural History Tour</i>	<i>Tundra Wilderness Tour</i>	<i>Tundra Wilderness Tour</i>	<i>Tundra Wilderness Tour</i>
IS THE MCKINLEY EXPLORER® RAILWAY INCLUDED?	Yes	Yes	Yes	Yes
WHY SHOULD I CHOOSE THIS CRUISE TOUR?	Denali + the Alaska Railroad in the shortest amount of time	Signature Denali experiences + up to 3-night stays	Iconic Alaska favorites + Alyeska, Seward or Homer	Unique guided tour of Denali & visit to Dawson City, Yukon



FEATURED

18-DAY DENALI & YUKON

ROUNDTRIP VANCOUVER

Itinerary: Y1

Noordam **May 11, 21, 25; Jun 4, 8, 18, 22; Jul 2, 6, 16, 20, 30; Aug 3, 13, 17, 27**

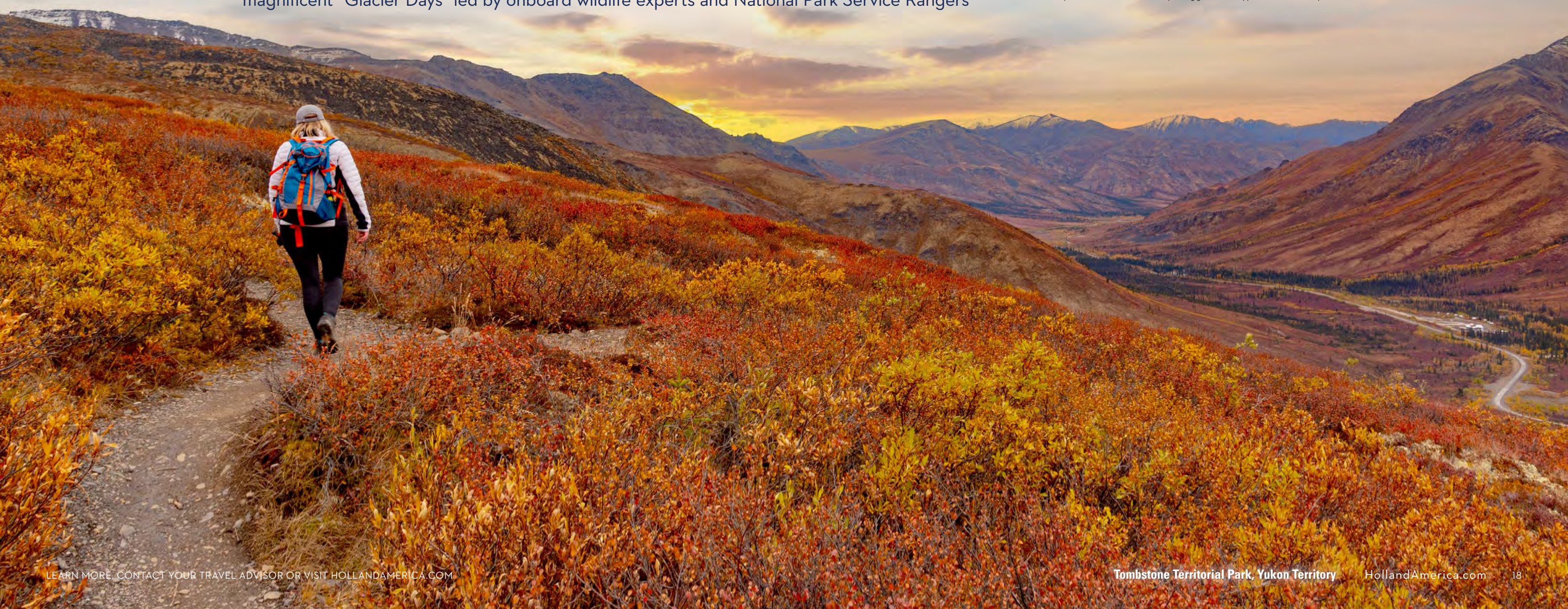
Nieuw Amsterdam **May 14, 18, 28; Jun 1, 11, 15, 25, 29; Jul 9, 13, 23, 27; Aug 6, 10, 20, 24; Sep 3**



- Spend 3 nights in the heart of the Yukon Territory, surrounded by untouched wilderness, pure wild nature and unmistakable frontier spirit
- Keep watch for wildlife during off-the-grid guided tours through the Yukon's pristine parks, colossal canyons, majestic mountains and rushing rivers
- Enjoy 3 nights at the gates of Denali National Park & Preserve and experience two magnificent "Glacier Days" led by onboard wildlife experts and National Park Service Rangers



Evening Stay. Departure between 10:00 p.m. and midnight.
 Calls to Glacier Bay National Park & Preserve are pending government approval. For the most up-to-date details and fares, visit HollandAmerica.com.



2025 ALASKA & DENALI CRUISETOURS ITINERARY OPTIONS



SIGNATURE ALASKA & DENALI CRUISETOURS (2 OR 3 NIGHTS AT DENALI)

	DAY 0	1	2	3	4	5	6	7	8	9	10	11	12
D1	DAY 0	1	2	3	4	5	6	7	8	9	10	11	12
land first	Fairbanks	Triple Denali		Anchorage	Whittier	Hubbard Glacier	Glacier Bay	Skagway	Juneau	Ketchikan	Inside Passage	Disembark Vancouver	
cruise first	Vancouver	Inside Passage	Ketchikan	Juneau	Skagway	Glacier Bay	College Fjord	Anchorage	Triple Denali		Fairbanks	Cruisetour Ends	
D2	DAY 0	1	2	3	4	5	6	7	8	9	10	11	
land first	Anchorage	Triple Denali		Whittier	Hubbard Glacier	Glacier Bay	Skagway	Juneau	Ketchikan	Inside Passage	Disembark Vancouver		DIRECT TO DENALI
cruise first	Vancouver	Inside Passage	Ketchikan	Juneau	Skagway	Glacier Bay	College Fjord	Triple Denali		Anchorage	Cruisetour Ends		
D0	DAY 0	1	2	3	4	5	6	7	8	9	10		DIRECT TO DENALI
land first	Fairbanks	Double Denali		Whittier	Hubbard Glacier	Glacier Bay	Skagway	Juneau	Ketchikan	Inside Passage	Disembark Vancouver		
cruise first	Vancouver	Inside Passage	Ketchikan	Juneau	Skagway	Glacier Bay	College Fjord	Double Denali		Fairbanks	Cruisetour Ends		
D5	DAY 0	1	2	3	4	5	6	7	8	9	10	11	
land first	Fairbanks	Double Denali		Anchorage	Whittier	Hubbard Glacier	Glacier Bay	Skagway	Juneau	Ketchikan	Inside Passage	Disembark Vancouver	
cruise first	Vancouver	Inside Passage	Ketchikan	Juneau	Skagway	Glacier Bay	College Fjord	Anchorage	Double Denali		Fairbanks	Cruisetour Ends	
D6	DAY 0	1	2	3	4	5	6	7	8	9	10		DIRECT TO DENALI
land first	Anchorage	Double Denali		Whittier	Hubbard Glacier	Glacier Bay	Skagway	Juneau	Ketchikan	Inside Passage	Disembark Vancouver		
cruise first	Vancouver	Inside Passage	Ketchikan	Juneau	Skagway	Glacier Bay	College Fjord	Double Denali		Anchorage	Cruisetour Ends		

- D1L** May 13, 20, 27; Jun 3, 10, 17, 24; Jul 1, 8, 15, 22, 29; Aug 5, 12, 19, 26; Sep 2, 9
- D1C** May 11, 18, 25; Jun 1, 8, 15, 22, 29; Jul 6, 13, 20, 27; Aug 3, 10, 17, 24, 31; Sep 7
- D2L** May 14, 21, 28; Jun 4, 11, 18, 25; Jul 2, 9, 16, 23, 30; Aug 6, 13, 20, 27; Sep 3, 10
- D2C** May 11, 18, 25; Jun 1, 8, 15, 22, 29; Jul 6, 13, 20, 27; Aug 3, 10, 17, 24, 31; Sep 7
- D0L** May 15, 22, 29; Jun 5, 12, 19, 26; Jul 3, 10, 17, 24, 31; Aug 7, 14, 21, 28; Sep 4, 11
- D0C** May 11, 18, 25; Jun 1, 8, 15, 22, 29; Jul 6, 13, 20, 27; Aug 3, 10, 17, 24, 31; Sep 7
- D5L** May 14, 21, 28; Jun 4, 11, 18, 25; Jul 2, 9, 16, 23, 30; Aug 6, 13, 20, 27; Sep 3, 10
- D5C** May 11, 18, 25; Jun 1, 8, 15, 22, 29; Jul 6, 13, 20, 27; Aug 3, 10, 17, 24, 31; Sep 7
- D6L** May 15, 22, 29; Jun 5, 12, 19, 26; Jul 3, 10, 17, 24, 31; Aug 7, 14, 21, 28; Sep 4, 11
- D6C** May 11, 18, 25; Jun 1, 8, 15, 22, 29; Jul 6, 13, 20, 27; Aug 3, 10, 17, 24, 31; Sep 7

ULTIMATE ALASKA & DENALI CRUISETOURS (2 NIGHTS AT DENALI)

	DAY 0	1	2	3	4	5	6	7	8	9	10	11	12	13	14
D3	DAY 0	1	2	3	4	5	6	7	8	9	10	11	12	13	14
land first	Fairbanks	Double Denali		Anchorage	Seward	Whittier	Hubbard Glacier	Glacier Bay	Skagway	Juneau	Ketchikan	Inside Passage	Disembark Vancouver		
cruise first	Vancouver	Inside Passage	Ketchikan	Juneau	Skagway	Glacier Bay	College Fjord	Seward	Anchorage	Double Denali		Fairbanks	Cruisetour Ends		
D4	DAY 0	1	2	3	4	5	6	7	8	9	10	11	12	13	14
land first	Fairbanks	Double Denali		Anchorage	Alyeska	Whittier	Hubbard Glacier	Glacier Bay	Skagway	Juneau	Ketchikan	Inside Passage	Disembark Vancouver		
cruise first	Vancouver	Inside Passage	Ketchikan	Juneau	Skagway	Glacier Bay	College Fjord	Alyeska	Anchorage	Double Denali		Fairbanks	Cruisetour Ends		
DH	DAY 0	1	2	3	4	5	6	7	8	9	10	11	12	13	14
land first	Fairbanks	Double Denali		Anchorage	Homer	Whittier	Hubbard Glacier	Glacier Bay	Skagway	Juneau	Ketchikan	Inside Passage	Disembark Vancouver		
cruise first	Vancouver	Inside Passage	Ketchikan	Juneau	Skagway	Glacier Bay	College Fjord	Homer	Anchorage	Double Denali		Fairbanks	Cruisetour Ends		

- D3L** May 11, 18, 25; Jun 1, 8, 15, 22, 29; Jul 6, 13, 20, 27; Aug 3, 10, 17, 24, 31; Sep 7
- D3C** May 11, 18, 25; Jun 1, 8, 15, 22, 29; Jul 6, 13, 20, 27; Aug 3, 10, 17, 24, 31; Sep 7
- D4L** May 11, 18, 25; Jun 1, 8, 15, 22, 29; Jul 6, 13, 20, 27; Aug 3, 10, 17, 24, 31; Sep 7
- D4C** May 11, 18, 25; Jun 1, 8, 15, 22, 29; Jul 6, 13, 20, 27; Aug 3, 10, 17, 24, 31; Sep 7
- DHL** May 11, 18, 25; Jun 1, 8, 15, 22, 29; Jul 6, 13, 20, 27; Aug 3, 10, 17, 24, 31; Sep 7
- DHC** May 11, 18, 25; Jun 1, 8, 15, 22, 29; Jul 6, 13, 20, 27; Aug 3, 10, 17, 24, 31; Sep 7

CLASSIC ALASKA & DENALI CRUISETOURS (1 NIGHT AT DENALI)

	DAY 0	1	2	3	4	5	6	7	8	9	10
D7	DAY 0	1	2	3	4	5	6	7	8	9	10
land first	Fairbanks	Denali	Anchorage	Whittier	Hubbard Glacier	Glacier Bay	Skagway	Juneau	Ketchikan	Inside Passage	Disembark Vancouver
cruise first	Vancouver	Inside Passage	Ketchikan	Juneau	Skagway	Glacier Bay	College Fjord	Anchorage	Denali	Fairbanks	Cruisetour Ends
D8	DAY 0	1	2	3	4	5	6	7	8	9	
land first	Fairbanks	Denali	Whittier	Hubbard Glacier	Glacier Bay	Skagway	Juneau	Ketchikan	Inside Passage	Disembark Vancouver	
cruise first	Vancouver	Inside Passage	Ketchikan	Juneau	Skagway	Glacier Bay	College Fjord	Denali	Fairbanks	Cruisetour Ends	
D9	DAY 0	1	2	3	4	5	6	7	8	9	10
land first	Anchorage	Talkeetna	Denali	Whittier	Hubbard Glacier	Glacier Bay	Skagway	Juneau	Ketchikan	Inside Passage	Disembark Vancouver
cruise first	Vancouver	Inside Passage	Ketchikan	Juneau	Skagway	Glacier Bay	College Fjord	Denali	Talkeetna	Anchorage	Cruisetour Ends

- D7L** May 15, 22, 29; Jun 5, 12, 19, 26; Jul 3, 10, 17, 24, 31; Aug 7, 14, 21, 28; Sep 4, 11
- D7C** May 11, 18, 25; Jun 1, 8, 15, 22, 29; Jul 6, 13, 20, 27; Aug 3, 10, 17, 24, 31; Sep 7
- D8L** May 16, 23, 30; Jun 6, 13, 20, 27; Jul 4, 11, 18, 25; Aug 1, 8, 15, 22, 29; Sep 5, 12
- D8C** May 11, 18, 25; Jun 1, 8, 15, 22, 29; Jul 6, 13, 20, 27; Aug 3, 10, 17, 24, 31; Sep 7
- D9L** May 15, 22, 29; Jun 5, 12, 19, 26; Jul 3, 10, 17, 24, 31; Aug 7, 14, 21, 28; Sep 4, 11
- D9C** May 11, 18, 25; Jun 1, 8, 15, 22, 29; Jul 6, 13, 20, 27; Aug 3, 10, 17, 24, 31; Sep 7

2025 ALASKA, DENALI & YUKON CRUISETOURS ITINERARY OPTIONS



ALASKA, DENALI & YUKON CRUISETOURS WITH GLACIER DISCOVERY CRUISE

Y1	DAY 0	1	2	3	4	5	6	7	8	9	10	11	12	13
land first	Vancouver	Whitehorse	Dawson	Fairbanks	Fairbanks	Triple Denali	Triple Denali	Triple Denali	Triple Denali	Triple Denali	Triple Denali	Whittier	Hubbard Glacier	Glacier Bay
CONT'D	14	15	16	17	18									
		Skagway	Juneau	Ketchikan	Inside Passage	Disembark Vancouver								
cruise first	Vancouver	Inside Passage	Ketchikan	Juneau	Skagway	Glacier Bay	College Fjord	Anchorages	Anchorages	Anchorages	Triple Denali	Triple Denali	Triple Denali	Fairbanks
CONT'D	14	15	16	17	18									
		Dawson	Whitehorse	Vancouver	Cruisetour Ends									

▲ Y1L May 14, 21, 28; Jun 4, 11, 18, 25; Jul 2, 9, 16, 23, 30; Aug 6, 13, 20, 27; Sep 3
 Y1C May 11, 18, 25; Jun 1, 8, 15, 22, 29; Jul 6, 13, 20, 27; Aug 3, 10, 17, 24

▼ Y2L May 18, 25; Jun 1, 8, 15, 22, 29; Jul 6, 13, 20, 27; Aug 3, 10, 17, 24, 31; Sep 7
 Y2C May 11, 18, 25; Jun 1, 8, 15, 22, 29; Jul 6, 13, 20, 27; Aug 3, 10, 17, 24

Y2	DAY 0	1	2	3	4	5	6	7	8	9	10	11	12	13	14
land first	Vancouver	Dawson	Double Denali	Double Denali	Anchorages	Anchorages	Whittier	Hubbard Glacier	Glacier Bay	Skagway	Juneau	Ketchikan	Inside Passage	Disembark Vancouver	
cruise first	Vancouver	Inside Passage	Ketchikan	Juneau	Skagway	Glacier Bay	College Fjord	Anchorages	Anchorages	Double Denali	Dawson	Vancouver	Cruisetour Ends	Cruisetour Ends	

ALASKA, DENALI & YUKON CRUISETOURS WITH ALASKA INSIDE PASSAGE CRUISE

Y3	DAY 0	1	2	3	4	5	6	7	8	9	10	11	12	13	14
land first	Anchorage	Triple Denali	Triple Denali	Fairbanks	Dawson	Whitehorse	Skagway	Skagway	Skagway	Glacier Bay	Ketchikan	Inside Passage	Disembark Vancouver		
cruise first	Vancouver	Inside Passage	Juneau	Skagway	Whitehorse	Dawson	Fairbanks	Triple Denali	Triple Denali	Triple Denali	Anchorages	Cruisetour Ends	Cruisetour Ends		

▲ Y3L May 14, 17, 21, 24, 28, 31; Jun 4, 7, 11, 14, 18, 21, 25, 28; Jul 2, 5, 9, 12, 16, 19, 23, 26, 30; Aug 2, 6, 9, 13, 16, 20, 23, 27
 Y3C May 21, 24, 28, 31; Jun 4, 7, 11, 14, 18, 21, 25, 28; Jul 2, 5, 9, 12, 16, 19, 23, 26, 30; Aug 2, 6, 9, 13, 16, 20, 23, 27, 30

Y4	DAY 0	1	2	3	4	5	6	7	8	9	10	11	12
land first	Anchorage	Double Denali	Fairbanks	Dawson	Whitehorse	Skagway	Skagway	Skagway	Glacier Bay	Ketchikan	Inside Passage	Disembark Vancouver	
cruise first	Vancouver	Inside Passage	Juneau	Skagway	Whitehorse	Dawson	Fairbanks	Double Denali	Anchorages	Cruisetour Ends	Cruisetour Ends	Cruisetour Ends	

◀ Y4L May 16, 19, 23, 26, 30; Jun 2, 6, 9, 13, 16, 20, 23, 27, 30; Jul 4, 7, 11, 14, 18, 21, 25, 28; Aug 1, 4, 8, 11, 15, 18, 22, 25
 Y4C May 21, 24, 28, 31; Jun 4, 7, 11, 14, 18, 21, 25, 28; Jul 2, 5, 9, 12, 16, 19, 23, 26, 30; Aug 2, 6, 9, 13, 16, 20, 23, 27, 30

Y5	DAY 0	1	2	3	4	5	6	7	8	9	10	11
land first	Anchorage	Double Denali	Fairbanks	Dawson	Whitehorse	Skagway	Skagway	Glacier Bay	Ketchikan	Inside Passage	Disembark Vancouver	
cruise first	Vancouver	Inside Passage	Juneau	Whitehorse	Dawson	Fairbanks	Double Denali	Anchorages	Cruisetour Ends	Cruisetour Ends	Cruisetour Ends	

Y5L May 17, 20, 24, 27, 31; Jun 3, 7, 10, 14, 17, 21, 24, 28; Jul 1, 5, 8, 12, 15, 19, 22, 26, 29; Aug 2, 5, 9, 12, 16, 19, 23, 26
 Y5C May 21, 24, 28, 31; Jun 4, 7, 11, 14, 18, 21, 25, 28; Jul 2, 5, 9, 12, 16, 19, 23, 26, 30; Aug 2, 6, 9, 13, 16, 20, 23, 27, 30

Y6	DAY 0	1	2	3	4	5	6	7	8	9	10
land first	Anchorage	Double Denali	Fairbanks	Dawson	Whitehorse	Skagway	Glacier Bay	Ketchikan	Inside Passage	Disembark Vancouver	
cruise first	Vancouver	Inside Passage	Juneau	Whitehorse	Dawson	Fairbanks	Double Denali	Anchorages	Cruisetour Ends	Cruisetour Ends	

Y6L May 18, 25; Jun 1, 8, 15, 22, 29; Jul 6, 13, 20, 27; Aug 3, 10, 17, 24
 Y6C May 21, 24, 28, 31; Jun 4, 7, 11, 14, 18, 21, 25, 28; Jul 2, 5, 9, 12, 16, 19, 23, 26, 30; Aug 2, 6, 9, 13, 16, 20, 23, 27, 30

2025 CRUISETOURS

FEATURES & DINING PLANS

CRUISETOUR FEATURES	D1	D2	D3	D4	D5	D6	D7	D8	D9	D0	DH	Y1	Y2	Y3	Y4	Y5	Y6
GLACIER BAY NATIONAL PARK & PRESERVE Full day of scenic cruising and glacier watching	✓	✓	✓	✓	✓	✓	✓	✓	✓	✓	✓	✓	✓	LF*	LF*	LF*	LF*
MCKINLEY EXPLORER® Luxury domed railcars between Anchorage and Denali	✓	✓	✓	✓	✓	✓	✓	✓	✓	✓	✓	✓	✓	✓	✓	✓	✓
TUNDRA WILDERNESS TOUR (S)▪ 5- to 6-hour wildlife-spotting adventure deep into Denali	✓	✓	✓	✓	✓	✓				✓	✓	✓	✓	✓	✓	✓	✓
DENALI NATURAL HISTORY TOUR 4½- to 5-hour tour of Denali’s cultural and natural history							✓	✓	✓								
TOUR DIRECTOR Expert narration and travel coordination on land												✓	✓	✓	✓	✓	✓
RIVERBOAT DISCOVERY (L) IN FAIRBANKS Cruise the Alaska interior on an authentic sternwheeler	✓		✓	✓	✓		P	P		✓	✓	✓	CF	✓	✓	✓	
GOLD DREDGE 8 IN FAIRBANKS Pan for gold at an actual mining camp	P		✓	✓	P		P	P		P	✓	✓					
WHITE PASS & YUKON ROUTE RAILWAY Spectacular mountain ride on a narrow-gauge train														✓	✓	✓	✓
DIRECT TO DENALI Go directly between the ship and Denali; no overnight in Anchorage		R				M		R	R	R							
DIRECT RAIL TO THE SHIP Follow Alaska’s dramatic coastline by rail	✓	✓			✓		U	✓	✓	✓		✓	✓				
PORTAGE GLACIER View Ice Age-era icebergs from just 300 yards away		P	✓	✓		P			P								
MCKINLEY CHALET RESORT DENALI SUITES Spacious balcony, larger living area and enhanced amenities	U	U	U	U	U	U	U	U	U	U	U	U	U	U	U	U	U
SEATTLE CRUISETOUR CONNECTOR Make your cruisetour roundtrip from Seattle	✓					✓		✓								✓	
KLONDIKE GOLD TOUR Visit the historic site that triggered the Klondike Gold Rush														✓	✓	✓	

L = Lunch included; S = Snack included, full lunch upgrade available; U = Upgrade; P = Pre/post additional excursion; CF = Cruise First cruisetours only; LF = Land First cruisetours only; R = McKinley Explorer railway between the ship and Denali; M = Luxury motorcoach with included lunch between the ship and Denali.
 ♦ In lieu of Glacier Bay, Y3–Y6 Cruise First cruisetours offer an OPTIONAL excursion to Tracy Arm and the twin Sawyer Glaciers.
 ▪ Visits to the park in May and September are dependent on conditions. If necessary, the **Tundra Wilderness Tour** may be replaced by the **Denali Natural History Tour**.

INCLUDED DINING: All cruise dining is included. An additional snack is provided on the **Tundra Wilderness Tour**. Lunch is included before or after the Riverboat *Discovery* cruise as well as on the luxury motorcoach between Anchorage and Denali (D2), Whittier and Denali (D6), Anchorage and Homer (DH), Fairbanks and Denali (D3 Land First and D4 Land First), and Dawson City and Whitehorse (Y3, Y4, and Y5).

GREAT LAND DINING PLANS

Relax and focus all your attention on Alaska & the Yukon’s spectacular sights, amazing wildlife, and historic outposts, knowing that most of your meals — and gratuities — have been pre-planned and paid for with our Great Land Dining Plan. Choose a breakfast-only, Denali or full dining plan to pair with your journey. Dining plans are available on cruisetours only.



Denali Suite



Canyon Steakhouse, McKinley Chalet Resort



Explore our deluxe accommodations



Skagway, Alaska

ALASKA UP CLOSE™

We are the Alaska vacation experts, now offering more access to Alaska wildlife and the chance to see more Alaska glaciers than any other cruise line. We make it easy to experience Alaska Up Close with a range of 360° destination programming – from insightful talks on the World Stage, to locally sourced cuisine in our onboard restaurants, to shore excursions that bring you closer to the Last Frontier’s untold wonders. Our perfectly sized ships are small enough to assure close-up views of Alaska’s glaciers, wildlife, and wilderness, yet large enough to hold the wealth of dining and entertainment options our guests have come to expect. Uncover the best of the 49th state with Alaska Up Close and Holland America Line.

DISCOVER | TASTE | EXPERIENCE

DISCOVER ALASKA ONBOARD ENRICHMENT

ALASKA UP CLOSE™



Authorized
Concessioner
Glacier Bay National Park

National Park Service Ranger



- See glaciers up close, savor piping-hot Dutch pea soup and learn more about Alaska’s ecosystem from National Park Service Rangers during our popular “Glacier Days”
- Learn the best times and locations for wildlife spotting from onboard experts
- Hear native tribespeople share fascinating tales of Alaska days gone by
- Get the most out of your Alaska journey with our designated viewing locations



Insights from onboard experts



Native Alaskan perspectives

Click to **LEARN MORE** about **ALASKA UP CLOSE®**

TASTE ALASKA FRESH FAVORITES

ALASKA UP CLOSE



Fresh Halibut XO

FROM PORT TO PLATE FRESH ALASKA SEAFOOD

Following the success of becoming the first and only cruise line to receive the Responsible Fisheries Management certification for serving only 100% fresh, sustainable Alaska seafood, we're introducing a new, first-of-its-kind Global Fresh Fish Program, offering more than 80 varieties of fresh fish sourced locally from across our worldwide network! With more fresh fish and ingredients native to the places we visit, our destination dining tells the story of each region through its unique flavors.

- Enjoy fresh, sustainable seafood and local specialties such as reindeer sausage, baked salmon, and fresh-picked berry desserts
- Reel in your own salmon or halibut in the waters of Juneau or Ketchikan and have it prepared and served to you on board through our **Savor My Catch** program
- Savor Gold Rush dinners, seafood boils, salmon bakes and more!



Calved glacial ice

NOW SERVING AUTHENTIC GLACIAL ICE COCKTAILS

We've partnered with Alaska Glacial Ice to source already-calved glacial ice from 800-year-old Alaska glaciers to use in our signature cocktails.

- Juneauper Gin & Tonic
- Black & Blue
- Blue Iceberg
- Blue on Blue
- Alaska Blue Ice
- Whiskey Over America's Glacial Ice

Click to **LEARN MORE** about **ALASKA UP CLOSE® DINING**

EXPERIENCE ALASKA SHORE EXCURSIONS

ALASKA UP CLOSE™



Tracy Arm Fjord, Alaska

- Connect deeply with the people, culture and history of Alaska on our acclaimed shore excursions
- See the 49th state's signature glaciers by foot, bike, kayak and more
- Spot amazing wildlife on our 175+ animal sanctuary, sightseeing and land excursions
- Learn the secret meanings behind totem carvings and immerse yourself in native cultures



White Pass & Yukon Route Railway



Flightseeing excursion

Click to **LEARN MORE** about
ALASKA UP CLOSE® EXCURSIONS



ONBOARD EXPERIENCE

Days at sea and nights on board our perfectly sized ships are ideal for enjoying fresh Alaska flavors, world-class entertainment, indoor and outdoor activities, and so much more.



DINING



ENTERTAINMENT



ACTIVITIES



SPA & SALON

Award-winning food, wine and cocktails

COMPLIMENTARY DINING OPTIONS

- 24-hour room service
- Dining Room
- Dive-In
- Lido Market
- New York Deli & Pizza
- New York Pizza

SPECIALTY RESTAURANTS

- Canaletto
- Nami Sushi
- Pinnacle Grill
- Rudi's Sel de Mer
- Tamarind

COFFEE & TREATS

- Crow's Nest Café
- Gelato
- Grand Dutch Café

BARS & LOUNGES

- Crow's Nest
- Explorer's Lounge
- Gallery Bar
- Lido Bar
- MIX
- NOTES
- Ocean Bar
- Panorama Bar
- Pinnacle Bar
- Sea View Bar
- Tamarind Bar
- Taste

From classic trios to Memphis-style R&B

MUSIC CLUBS



ONLY ON THE WORLD STAGE

- Alaska's Native Legends
- Cantaré
- Major Fourth
- Roadhouse
- Step One Dance Company

Tai Chi, pickleball and more

ARTS & CRAFTS, SPORTS, AND MORE

- Basketball
- Coloring for Adults
- Cornhole
- Game Shows
- Knitting
- Modern Brush Lettering
- Origami
- Painting on Canvas
- Pickleball
- Shuffleboard
- Table Tennis
- Trivia

WELLNESS & FITNESS

- Body Composition Analysis
- Circuit Training
- Fitness Center
- Guided Meditation & Stretching
- Nutritional Counseling
- Pain Management Workshops
- Personal Training
- Sport Court

Rejuvenate your senses

SPA SERVICES

- Acupuncture Services
- Couples Treatments
- Facial Treatments
- Hair & Nail Services
- Massage & Body Therapies
- Medi-Spa Cosmetic Treatments
- Teeth Whitening
- Thermal Suite & Hydropool



Offerings vary by ship. Scan here to compare dining, activities and other amenities across our fleet.

LIMITED TIME OFFER

Early Booking *Bonus* Have it all.

Receive 60% off our top amenities with our new fully refundable Have It All Early Booking Bonus!*

For a limited time, enjoy all the benefits of our standard Have It All package, including Shore Excursion and Specialty Dining credit, plus free prepaid Crew Appreciation, our Low Price Guarantee*, and upgrades to the Elite Beverage Package and Premium Wi-Fi. Don't wait – limited availability while supplies last!



BOOK EARLY TO RECEIVE OUR BEST VALUE ON TOP AMENITIES



FREE PREPAID CREW APPRECIATION

Crew Appreciation, or stateroom gratuities, is covered for you (a value of us\$16 per day for Interior, Ocean View, and Verandah staterooms and us\$17.50 per day for suites) to recognize the efforts of a wide variety of crew members who contribute to the experiences of all our guests.



LOW PRICE GUARANTEE

If you find a lower, identical fare for your cruise before this offer expires, you are eligible to receive the difference in the form of an Onboard Credit, stateroom upgrade or more!



SHORE EXCURSIONS

The longer you cruise, the more you can explore!

- Cruise 6–9 days and get a us\$100 Shore Excursion credit;
- Cruise 10–20 days and get a us\$200 Shore Excursion credit;
- Cruise 21+ days and get a us\$300 Shore Excursion credit.



FREE UPGRADE PREMIUM WI-FI

Stay connected throughout your journey. Surf the web, use social media, check email, and send messages to friends and family.



FREE UPGRADE ELITE BEVERAGE PACKAGE

Choose from a large selection of wine, beer, spirits, and cocktails, plus non-alcoholic options such as sodas, coffees, and more – with service charges included.



SPECIALTY DINING

Enhance your cruise with award-winning specialty dining at the famed Pinnacle Grill, Canaletto or Tamarind – with service charges included.

Click to see our **HAVE IT ALL EARLY BOOKING BONUS ITINERARIES**



Book Today – Limited-Time Offer

Early Booking *Bonus* Have it all.

Up to 3 Nights' Specialty Dining

Includes service charges; varies by voyage length

Up to us\$300 Shore Excursion Credit

Varies by voyage length

FREE UPGRADE:
Elite Beverage Package

Includes service charges

FREE UPGRADE:
Premium Wi-Fi

FREE Prepaid Crew Appreciation

Gratuities

LOW PRICE GUARANTEE

U.S. & Canada only

See page 25 for terms and conditions.

TERMS & CONDITIONS

RESERVATIONS

Accommodations are limited. If you use a travel agent/travel agency (“TA”) to book your reservation, you shall pay deposits and payments for Holland America Line’s (“HAL”) services to such TA. HAL will issue travel documents only if and when it has received full payment from TA. HAL will make any refunds to the applicable TA based only on the amount HAL actually received, less any applicable cancellation fees and charges; guest is responsible for obtaining any refund monies from TA.

DEPOSIT & FINAL PAYMENT REQUIREMENTS

Deposit is required at the time of cruise booking and final payment of balance must be received no later than 90 days prior to departure.

CANCELLATIONS

Our cancellation policy allows you to cancel your 2025 Alaska cruise up to 75 to 91 days prior to departure, depending on the cruise, and receive a full refund. If you cancel your 2025 Alaska cruise within 75 to 90 days prior to departure, depending on the cruise, you are required to pay a cancellation fee (including 3rd and 4th berths) as set forth below. Such fees are based on the fare paid, excluding Taxes, Fees & Port Expenses (“TFPE”), transfers, surcharges, shore and land excursions, and most pre-purchased gift(s) and/or special service(s). See more details in the [Cruise Contract](#). For 2025 Alaska cruises, the cancellation fee amount varies based on the length of sailing and timing of cancellation as follows:

2025 ALASKA CRUISES – 7- TO 14-DAY CRUISES For USD, Australian and Canadian pricing	
Number of Days Before Sailing Date on Which Guest Cancels Cruise	Amount of Cancellation Fee
90+ days notice	0%
89–76 days notice	Amount equal to deposit requirement
75–61 days notice	50% of gross fare
60–31 days notice	75% of gross fare
30 days or less notice	100% of gross fare

28-DAY ARCTIC CIRCLE SOLSTICE CRUISE	
Number of Days Before Sailing Date on Which Guest Cancels Cruise	Amount of Cancellation Fee
120+ days notice	0%
119–91 days notice	Amount equal to deposit requirement
90–76 days notice	60% of gross fare
75 days or less notice	100% of gross fare

Change to arrangements may be subject to change charges.

CREW APPRECIATION & SERVICE CHARGES

For your convenience, Crew Appreciation will automatically be added to your onboard account to recognize the efforts of a wide variety of crew members in various departments, including those in the Dining, Entertainment, Guest Services, and Galley areas. The amount of the Crew Appreciation is based on your stateroom category and is subject to adjustment at your discretion, except as otherwise provided in the Crew Appreciation and Service Charge Policy. A Service Charge will automatically be added to optional purchases of beverage packages, drinks, dining room and specialty dining, onboard parties, and other services or amenities provided to guests that are not included in the cruise fare. The Crew Appreciation and Service Charge payments on all vessels in our fleet are pooled and distributed in the form of compensation, including bonuses. For further details, please review our [Crew Appreciation and Service Charge Policy](#).

TAXES, FEES & PORT EXPENSES

“Taxes, Fees & Port Expenses,” or “TFPE” as used by HAL, may include any and all

fees, charges, tolls, and taxes imposed on HAL by governmental or quasi-governmental authorities, as well as third-party fees and charges arising from a vessel’s presence in a harbor or port. TFPE may be assessed per guest, per berth, per ton, or per vessel. TFPE are subject to change, and HAL reserves the right to collect any increases in effect at the time of sailing even if the fare has already been paid in full.

GUESTS WITH DISABILITIES

Holland America Line seeks to accommodate the needs of guests with disabilities, to the extent feasible. Some accommodations require advanced notification. For more information, visit the [Accessible Cruising section](#) of our website.

MEDICAL SERVICES

Each of our ships is equipped with limited medical facilities that are staffed by a physician and registered nurses. Unless otherwise indicated in an active HAL policy (for example, the COVID-19 Protection Program), guest will be charged a fee for all medical services and medications obtained on board. If the onboard physician is unable to care for your needs on board, you will be transferred to medical facilities on shore. If your condition will require you to have a special medical apparatus or assistance on board, we must be made aware of that at the time of booking in order to determine whether we can accommodate your needs.

PASSPORTS / VISAS / IMMUNIZATIONS

You are solely responsible for securing and having available all proper documentation for the countries visited on your cruise or land tour and for bringing all necessary travel documents such as passports, visas, proof of citizenship, re-entry permits, minors’ permissions, and medical certificates showing all necessary vaccinations. Guests should check with their TA or the appropriate governmental authority to determine the necessary documents. Guest will be refused boarding or disembarked without recourse or liability for refund, payment, compensation, or credit of any kind if they do not have proper documentation, and they will be subject to any fine or other costs incurred by HAL that result from improper documentation or non-compliance with applicable regulations.

RESPONSIBILITY

All HAL vessels are owned by HAL Antillen N.V. and operated by Holland America Line N.V. in its capacity as general partner of Cruiseport Curaçao C.V. Transportation on board the ship is provided solely by the Shipowner and Operator and pursuant to the [Cruise Contract](#) that you will receive prior to embarkation. Ships’ Registry: The Netherlands.

Non–Holland America Line services (for example, shore excursions) are generally performed by independent contractors. These non–Holland America Line services are solely at your risk and subject to the terms or arrangements with the independent contractor. HAL assumes no responsibility with respect to these non–Holland America Line services (including cancellation, injury, or death) even though HAL may collect monies or make bookings.

ACCURACY OF CONTENTS / GENERAL

Contents of this brochure, including terms and conditions, are subject to change at any time at the sole discretion of HAL. Please refer to [HollandAmerica.com](#) for up-to-date information. **Any advertised offer may be changed or revoked at any time.**

Situations may arise which, in our opinion, make it necessary for us to cancel, advance, or postpone a scheduled departure, change itineraries, or make substitutions involving hotels, restaurants, ports of call, other travel components, vessels, or other modes of transportation. In that event, we do not assume responsibility or liability for any resulting losses, expenses, or inconvenience. We are not required to make refunds once travel commences, regardless of the reason for guests being unable to complete their travel.

The ship names and all other trademarks, slogans, logos, and imagery used herein are, whether or not registered, owned by Holland America Line N.V.

All guests will be required to agree to the [Cruise Contract](#) and all information and terms therein.



CALL YOUR TRAVEL ADVISOR OR
1-877-SAIL HAL (1-877-724-5425)



CALL YOUR TRAVEL ADVISOR
OR **1300 987 322**



CALL YOUR TRAVEL ADVISOR
OR **0344 338 8605**

OR VISIT
HOLLANDAMERICA.COM


Holland America Line®



HAVE IT ALL EARLY BOOKING BONUS TERMS & CONDITIONS Have It All Early Booking Bonus Offer (“Early Booking Bonus Offer”) fare and its parts are neither transferable nor refundable and have no cash value. Early Booking Bonus Offer fares available only on select departures and exclude Grand Voyages and any voyage lasting 5 days or less. Any advertised fare may be changed or revoked at any time. Fares are subject to full terms and conditions, available at [HollandAmerica.com/package-terms](#). **Elite Beverage Package**

has a daily limit of 15 beverages. Available only for beverages priced at US\$15 or less. Must be 21+ for alcoholic beverages. Management reserves the right to revoke the package and may refuse service for any reason. The package excludes beverages purchased in The Shops, from the mini-bar, through 24-hour room service or on Half Moon Cay. **Specialty Dining** based on cruise duration and ship type. Dining options are determined by ship and exclude all events in Pinnacle Grill. **Shore Excursion** offer is based on cruise duration and is per person, not per stateroom. For **Alaska cruisetours** and 6- to 9-day voyages, eligible guests will receive US\$100 credit per person to apply toward their shore excursion purchase(s). For 10- to 20-day voyages, eligible guests will receive US\$200 credit per person to apply toward their shore excursion purchase(s). For 21+ day voyages (excluding Grand Voyages), eligible guests will receive US\$300 credit per person to apply toward their shore excursion purchase(s). Shore Excursion credit must be used pre-cruise when applied toward an Alaska Cruisetour Land Excursion purchase. Shore Excursion credit must be used on corresponding cruise and is non-refundable. **Wi-Fi Premium Package:** All onboard Internet usage is subject to HAL’s standard policies, which may limit or block browsing/use of some sites or applications due to network security and bandwidth usage. Offerings are subject to change without notice. Plan can be used on any device, but only one device can be actively connected at a time. Upgrades are available once on board. Offer applies to 1st/2nd guests in a stateroom only. **Low Price Guarantee:** If a guest books a HAL cruise with the Early Booking Bonus Offer (the “original booking”) and such guest finds a cheaper price for an identical booking within the duration of the Early Booking Bonus Offer (the “Comparison Fare”), the difference may be compensated in the form of an onboard credit, stateroom upgrade or other method. HAL reserves the sole right to determine the method of compensation made to guests. A fare will be considered a Comparison Fare only if its booking consists of details that are identical to those of the original booking (including, but not limited to, the same ship, sail dates, stateroom category and number of guests as the original booking). A determination as to whether the located fare is identical to the original booking will be at HAL’s sole discretion. HAL reserves the right to apply this price protection and offer at its discretion. Other restrictions and exclusions may apply. Holland America Line is neither responsible nor liable for any printing errors. Promotion is based on promotion code(s) N2 and based on double occupancy. Ships’ Registry: The Netherlands.



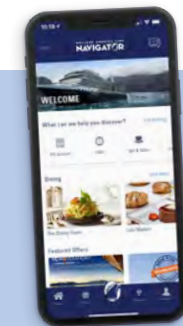
HAVE IT ALL EARLY BOOKING BONUS TERMS & CONDITIONS Have It All Early Booking Bonus Offer (“Early Booking Bonus Offer”) is available for a limited time, on a first-come, first-served basis, to the first guests that make a new booking in connection with the Early Booking Bonus Offer while it is available. Taxes, Fees & Port Expenses are included. All values herein are in USD. Holland America Cruise Line (“HAL”) may change or revoke the Offer or its parts at any time. Other exclusions and terms may apply; void where prohibited.

Early Booking Bonus Offer and its parts are neither transferable, substitutable, nor redeemable for cash. Early Booking Bonus Offer is available for 1st/2nd guests only and applies only to the cruise portion of Alaska cruisetours. Early Booking Bonus Offer fares available only on select departures and exclude Grand Voyages and any voyage lasting 5 days or less. **Elite Beverage Package** has a daily limit of 15 beverages, including all beverages priced at US\$15 or less and includes beverage service charges. The Elite Beverage Package includes wine, beer, spirits, cocktails, non-alcoholic beverages, sodas, bottled water (sparkling or still, 400ml or less) and coffee. Guests must order one beverage at a time and be 21 years+ for alcoholic beverages. Sharing of any beverage or the package is not permitted. Beverage management/HAL reserve the right to revoke the package if misused and refuse service for any reason, including service of alcoholic beverages to intoxicated guests. Package excludes beverages purchased in The Shops, from the mini-bar, through 24-hour room service or on Half Moon Cay. **Specialty Dining** is based on cruise duration and ship type. For 6- to 9-day voyages, guests will receive one night at Pinnacle Grill, Canaletto or Tamarind. For ships without Tamarind, guests will receive one night at Pinnacle Grill or Canaletto. For 10- to 20-day voyages, guests will receive two nights: one night at Pinnacle Grill and one night at Canaletto or Tamarind. For ships without Tamarind, guests will receive two nights: one night at Pinnacle Grill and one night at Canaletto. For 21+ day voyages (excluding Grand Voyages), guests will receive three nights: one night at Pinnacle Grill, one night at Tamarind and one night at Canaletto. For ships without Tamarind, guests will receive three nights: two nights at Pinnacle Grill and one night at Canaletto. Offer excludes Specialty Dining Events in Pinnacle Grill such as Sel de Mer, A Taste of De Librije and Cellar Master Dinner. Reservations and dining times will be available to pre-reserve. **Shore Excursion credit** is based on cruise duration and is per person, not per stateroom. For Alaska cruisetours and 6- to 9-day voyages, eligible guests will receive US\$100 credit per person to apply toward their shore excursion purchase(s). For 10- to 20-day voyages, eligible guests will receive US\$200 credit per person to apply toward their shore excursion purchase(s). For 21+ day voyages (excluding Grand Voyages), eligible guests will receive US\$300 credit per person to apply toward their shore excursion purchase(s). Shore Excursion credit must be used pre-cruise when applied toward an Alaska Cruisetour Land Excursion purchase. Shore Excursion credit cannot be redeemed for cash value or applied to a non–shore excursion item. **Wi-Fi Premium Package:** All onboard Internet usage is subject to HAL standard policies, which may limit browsing of some sites due to network security and bandwidth usage. Applications that use high bandwidth may be blocked and offerings are subject to change with or without notice. The plan can be activated on any device, but only one device can be actively connected at a time. Upgrades are available once on board for a single day, the remaining duration of the voyage or adding more devices. Offer applies to 1st/2nd guests in a stateroom only. **Crew Appreciation:** Receive prepaid stateroom gratuities on board. Gratuities for other services, including, but not limited to, bar, dining room, wine accounts and spa/salon services, are not included. HAL is not responsible or liable for any printing errors. Promotion is based on promotion code(s) N2 and based on double occupancy. Ships’ Registry: The Netherlands.



HAVE IT ALL EARLY BOOKING BONUS TERMS & CONDITIONS Have It All Early Booking Bonus Offer (“Early Booking Bonus Offer”) is available for a limited time, on a first-come, first-served basis, to the first guests that make a new booking in connection with the Early Booking Bonus Offer while it is available. Taxes, Fees & Port Expenses are included. All values herein are in USD. Holland America Cruise Line (“HAL”) may change or revoke the Offer or its parts at any time. Other exclusions and terms may apply; void where prohibited. Early Booking Bonus Offer and its parts

are neither transferable, substitutable, nor redeemable for cash. Early Booking Bonus Offer is available for 1st/2nd guests only and applies only to the cruise portion of Alaska cruisetours. Early Booking Bonus Offer fares available only on select 2024 and 2025 departures. **Elite Beverage Package** has a daily limit of 15 beverages, including all beverages priced at US\$15 or less, and includes beverage service charges. The Elite Beverage Package includes wine, beer, spirits, cocktails, non-alcoholic beverages, sodas, bottled water (sparkling or still, 400ml or less) and coffee. Guests must order one beverage at a time and be 21 years+ for alcoholic beverages. Sharing of any beverage or the package is not permitted. Beverage management/HAL reserve the right to revoke the package if misused and refuse service for any reason, including service of alcoholic beverages to intoxicated guests. Package excludes beverages purchased in The Shops, from the mini-bar, through 24-hour room service or on Half Moon Cay. **Specialty Dining** is based on cruise duration and ship type. For 6- to 9-day voyages, guests will receive one night at Pinnacle Grill, Canaletto or Tamarind. For ships without Tamarind, guests will receive one night at Pinnacle Grill or Canaletto. For 10- to 20-day voyages, guests will receive two nights: one night at Pinnacle Grill and one night at Canaletto or Tamarind. For ships without Tamarind, guests will receive two nights: one night at Pinnacle Grill and one night at Canaletto. For 21+ day voyages (excluding Grand Voyages), guests will receive three nights: one night at Pinnacle Grill, one night at Tamarind and one night at Canaletto. For ships without Tamarind, guests will receive three nights: two nights at Pinnacle Grill and one night at Canaletto. Offer excludes Specialty Dining Events in Pinnacle Grill such as Sel de Mer, A Taste of De Librije and Cellar Master Dinner. Reservations and dining times will be available to pre-reserve. **Shore Excursion credit** is based on cruise duration and is per person, not per stateroom. For Alaska cruisetours and 6- to 9-day voyages, eligible guests will receive US\$100 credit per person to apply toward their shore excursion purchase(s). For 10- to 20-day voyages, eligible guests will receive US\$200 credit per person to apply toward their shore excursion purchase(s). For 21+ day voyages (excluding Grand Voyages), eligible guests will receive US\$300 credit per person to apply toward their shore excursion purchase(s). Shore Excursion credit must be used pre-cruise when applied toward an Alaska Cruisetour Land Excursion purchase. Shore Excursion credit must be used on corresponding cruise and is non-refundable. Shore Excursion credit cannot be redeemed for cash value or applied to a non–shore excursion item. **Wi-Fi Premium Package:** All onboard Internet usage is subject to HAL standard policies, which may limit browsing of some sites due to network security and bandwidth usage. Applications that use high bandwidth may be blocked and offerings are subject to change with or without notice. The plan can be activated on any device, but only one device can be actively connected at a time. Upgrades are available once on board for a single day, the remaining duration of the voyage or adding more devices. Offer applies to 1st/2nd guests in a stateroom only. **Crew Appreciation:** Receive prepaid stateroom gratuities on board. Gratuities for other services, including, but not limited to, bar, dining room, wine accounts and spa/salon services, are not included. HAL is not responsible or liable for any printing errors. Promotion is based on promotion code(s) N2 and based on double occupancy. To be read in conjunction with the Holland America Line Cruise Contract at [HollandAmerica.com/en_US/legal-privacy-australia/cruise-contract.html](#), by which guests will be bound. Whilst all information is correct at time of publication, offers are subject to change or withdrawal. Carnival plc trading as Carnival Australia ABN 23 107 998 443 as agent for Holland America Line. Ships’ Registry: The Netherlands.



HOLLAND AMERICA LINE
NAVIGATOR

DOWNLOAD THE
NAVIGATOR® APP

The **Holland America Line Navigator® App** is your indispensable tool for cruise planning, essential updates, embarkation, managing your onboard experience and booking shore excursions.